

Physician Results

Please indicate how much you agree or disagree with the following statements using a scale of 1-7 where 1 represents, "Completely Disagree" and 7 represents, "Completely Agree"

Health care reform has made a significant amount of progress.

	Total (n=1,679)
MEAN	2.6

The current US health care system will be considerably improved in 5 years.

	Total (n=1,679)
MEAN	2.7

I am extremely confident that the current US health care system will be better in 5 years.

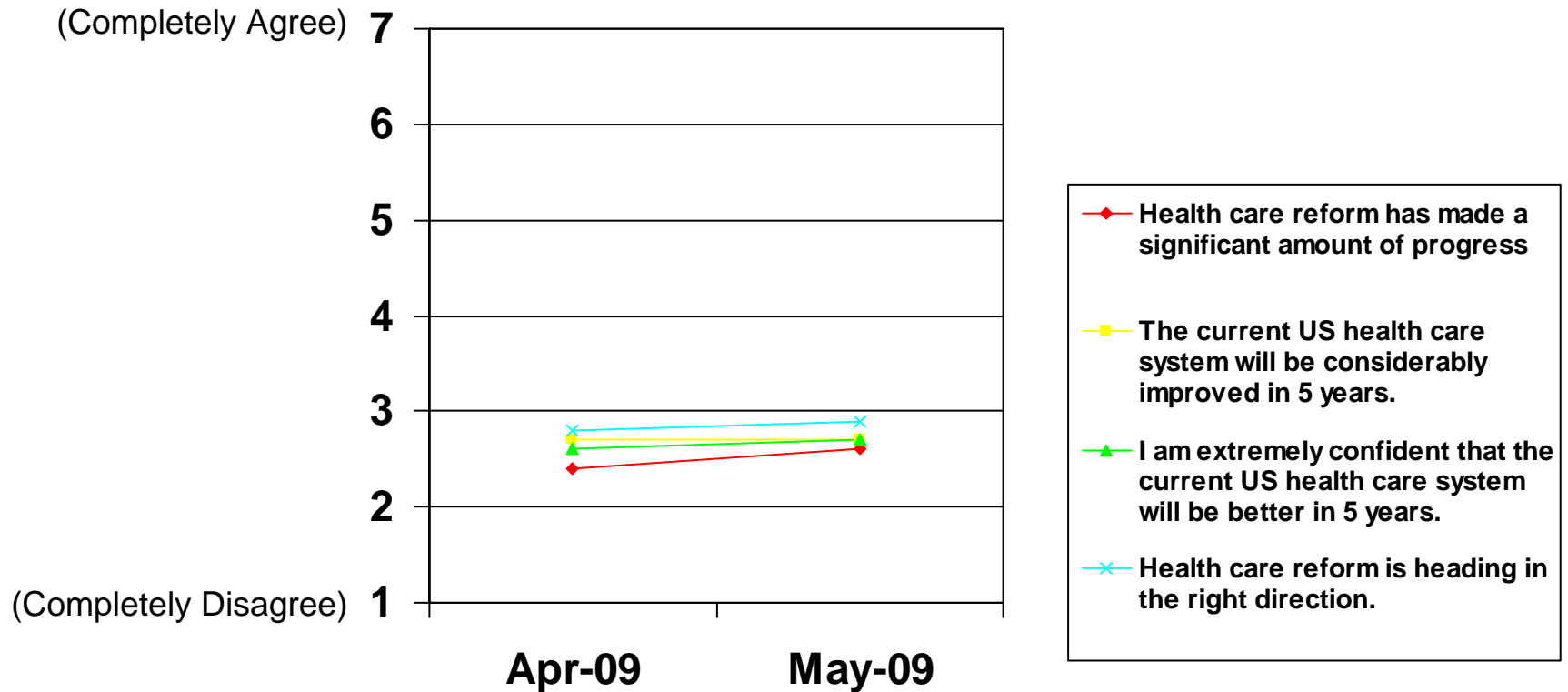
	Total (n=1,679)
MEAN	2.7

Health care reform is heading in the right direction.

	Total (n=1,679)
MEAN	2.9

Please indicate how much you agree or disagree with the following statements using a scale of 1-7 where 1 represents, "Completely Disagree" and 7 represents, "Completely Agree"

Physician Response



- ◆ Health care reform has made a significant amount of progress
- The current US health care system will be considerably improved in 5 years.
- ▲ I am extremely confident that the current US health care system will be better in 5 years.
- × Health care reform is heading in the right direction.

Percentages may not equal 100 due to rounding

Please indicate how favorable you are of each of the following industries/professions using a scale of 1-7 where 1 represents, "Not at all favorable" and 7 represents, "Extremely favorable."

Medical insurance

	Total (n=1,679)
MEAN	3.1

Prescription insurance

	Total (n=1,679)
MEAN	3.3

Hospital and long term care facilities

	Total (n=1,679)
MEAN	4.0

Physicians

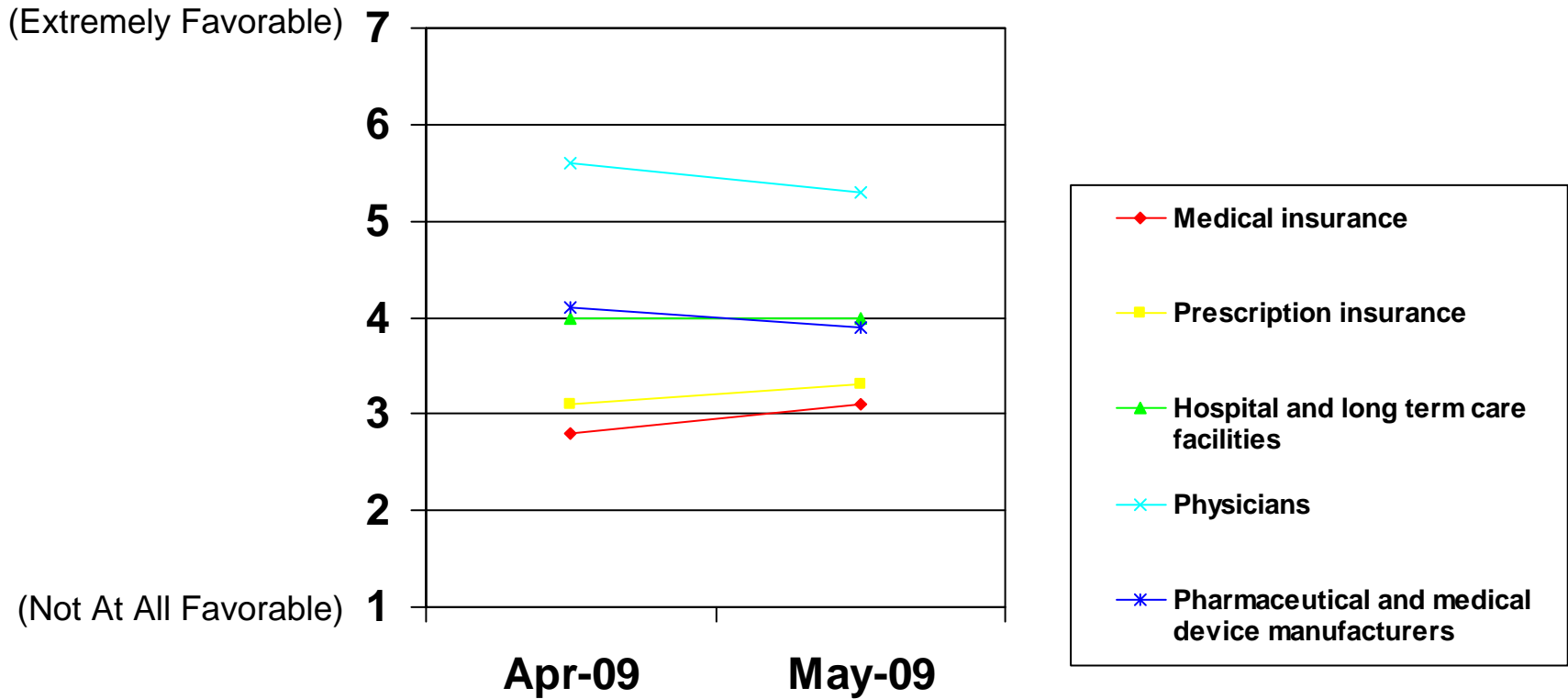
	Total (n=1,679)
MEAN	5.3

Pharmaceutical and medical device manufacturers

	Total (n=1,679)
MEAN	3.9

Please indicate how favorable you are of each of the following industries/professions using a scale of 1-7 where 1 represents, "Not at all favorable" and 7 represents, "Extremely favorable."

Physician Response

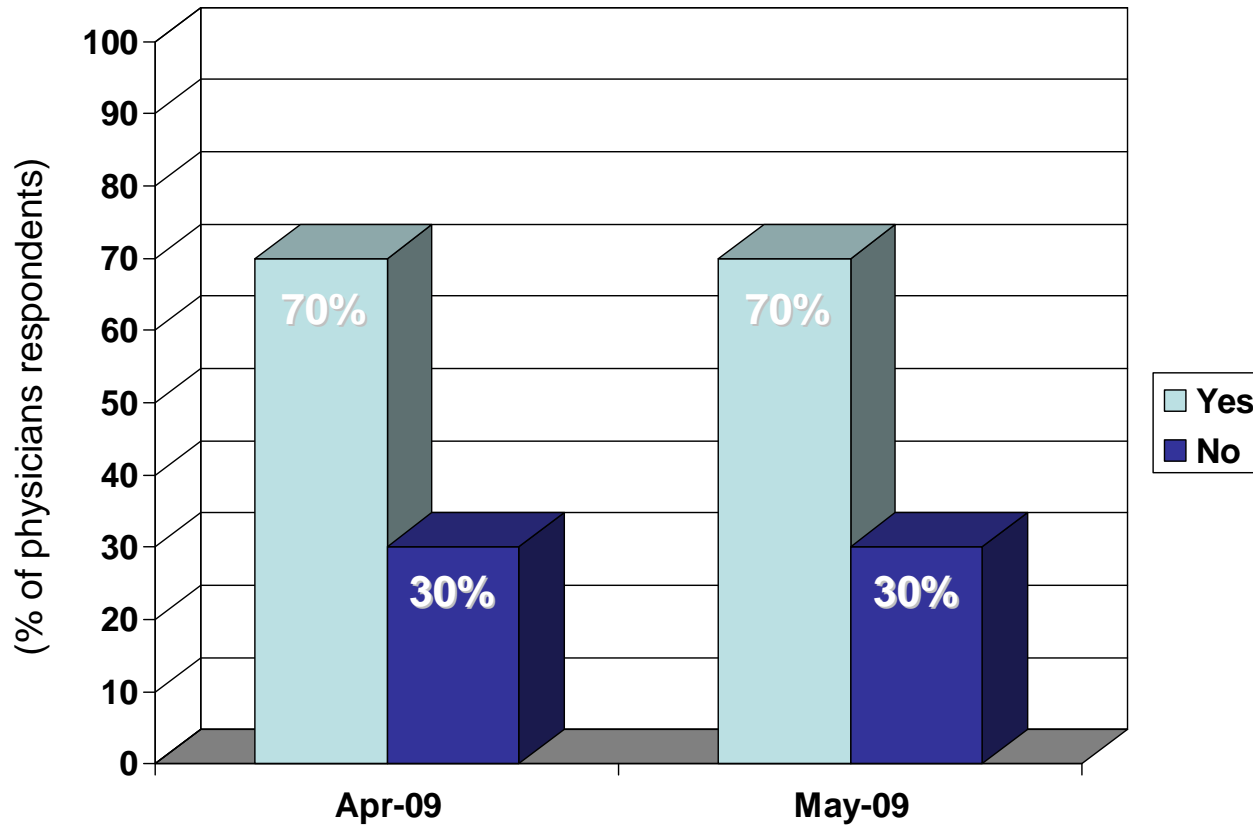


“If you were to choose your profession again today,
would you still choose to be a doctor?”

	Total (n=1,679)
Yes	70%
No	30%

Percentages may not equal 100 due to rounding

“If you were to choose your profession again today,
would you still choose to be a doctor?”



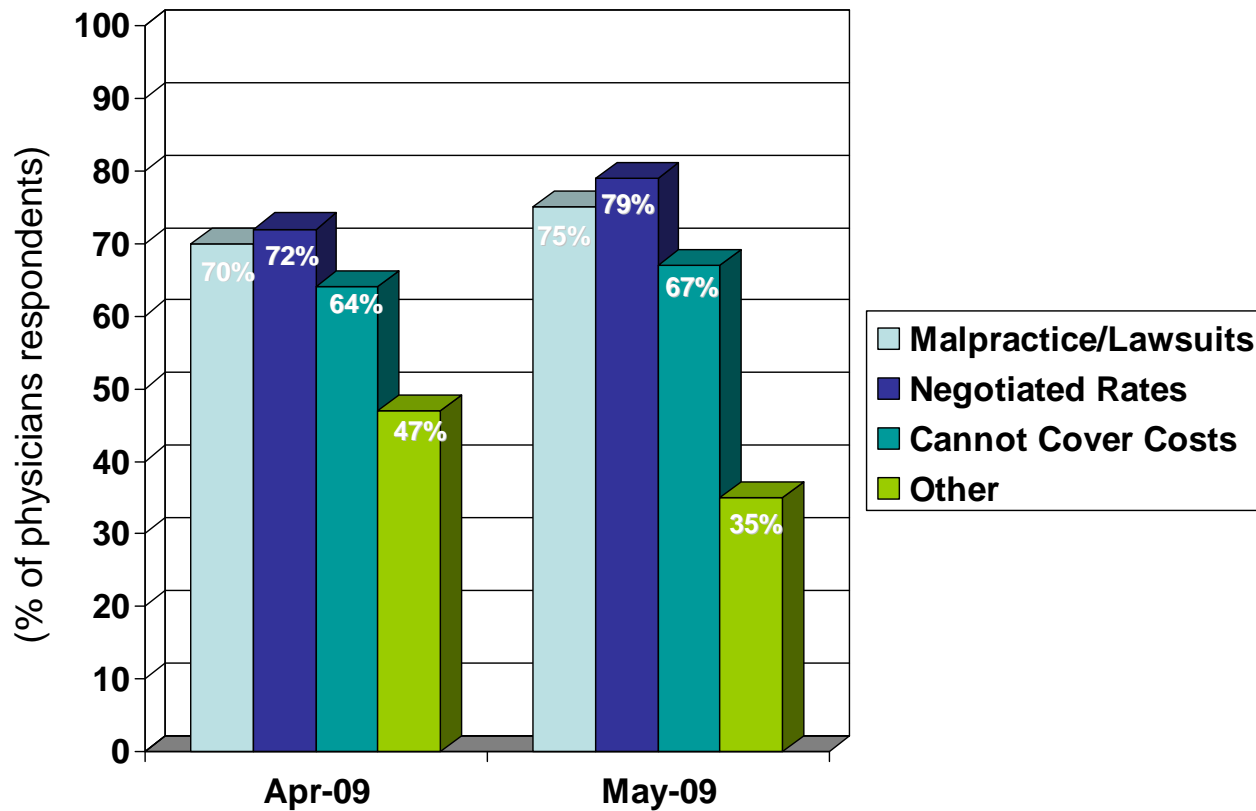
Percentages may not equal 100 due to rounding

“What factors contributed to this decision? Select all that apply.”

	Total (n=1,679)
Malpractice/law suits	75%
Negotiated rates	79%
Cannot cover costs	67%
Other	35%

Percentages may not equal 100 due to rounding

“What factors contributed to this decision? Select all that apply.”



Percentages may not equal 100 due to rounding

Consumer Results

Please indicate how much you agree or disagree with the following statements using a scale of 1-7 where 1 represents, "Completely Disagree" and 7 represents, "Completely Agree"

Health care reform has made a significant amount of progress.

	Total (n=2,254)
MEAN	3.0

The current US health care system will be considerably improved in 5 years.

	Total (n=2,254)
MEAN	3.6

I am extremely confident that the current US health care system will be better in 5 years.

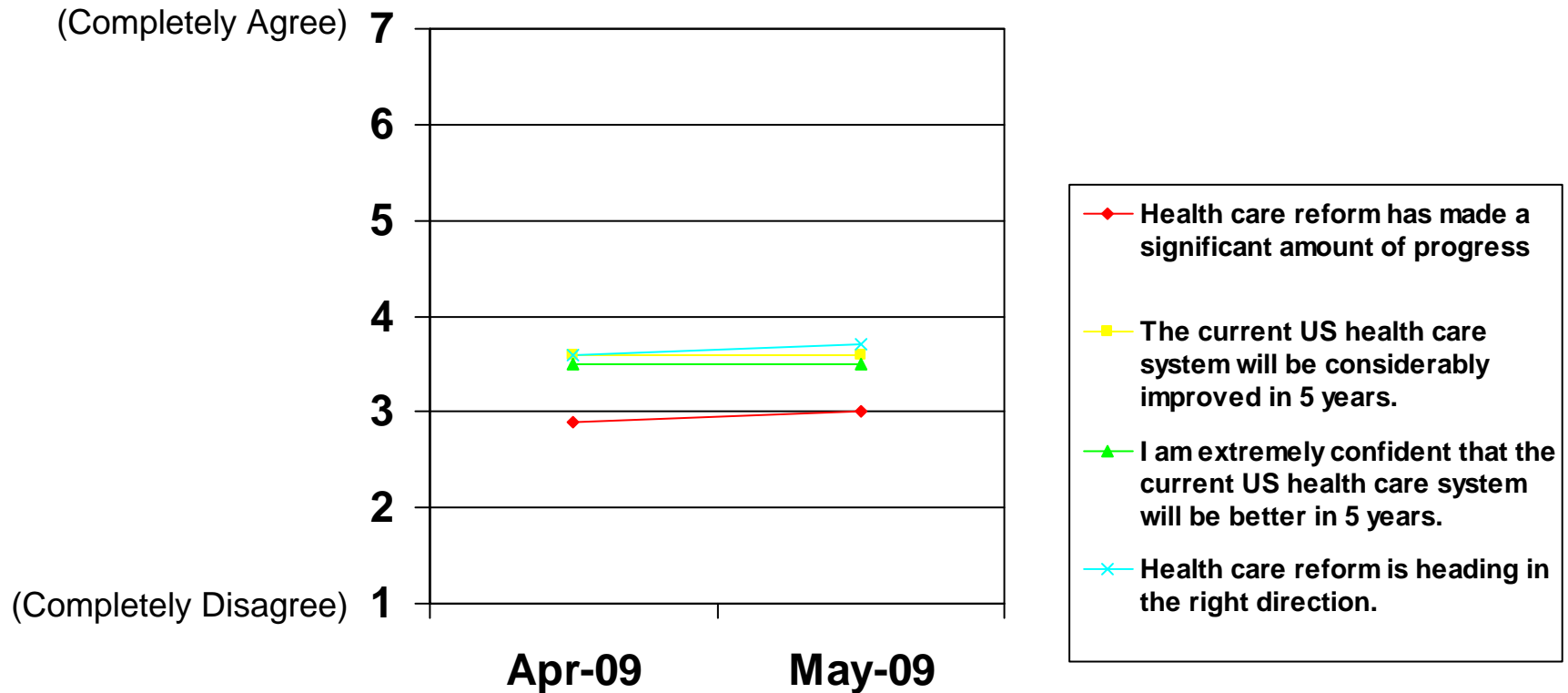
	Total (n=2,254)
MEAN	3.5

Health care reform is heading in the right direction.

	Total (n=2,254)
MEAN	3.7

Please indicate how much you agree or disagree with the following statements using a scale of 1-7 where 1 represents, "Completely Disagree" and 7 represents, "Completely Agree"

Consumer Response



Percentages may not equal 100 due to rounding

Please indicate how favorable you are of each of the following industries/professions using a scale of 1-7 where 1 represents, "Not at all favorable" and 7 represents, "Extremely favorable."

Medical insurance

	Total (n=2,254)
MEAN	3.7

Prescription insurance

	Total (n=2,254)
MEAN	3.8

Hospital and long term care facilities

	Total (n=2,254)
MEAN	4.1

Physicians

	Total (n=2,254)
MEAN	4.7

Pharmaceutical and medical device manufacturers

	Total (n=2,254)
MEAN	3.8

Please indicate how favorable you are of each of the following industries/professions using a scale of 1-7 where 1 represents, "Not at all favorable" and 7 represents, "Extremely favorable."

Consumer Response

