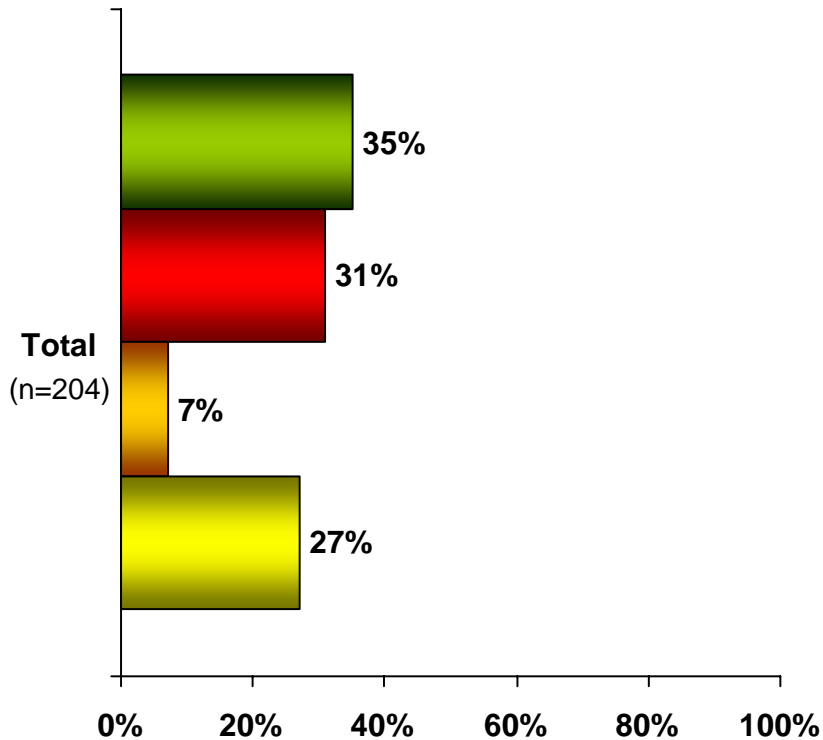


# “If the 2008 Presidential Election were held today, which of the following best describes whom you would vote for?”

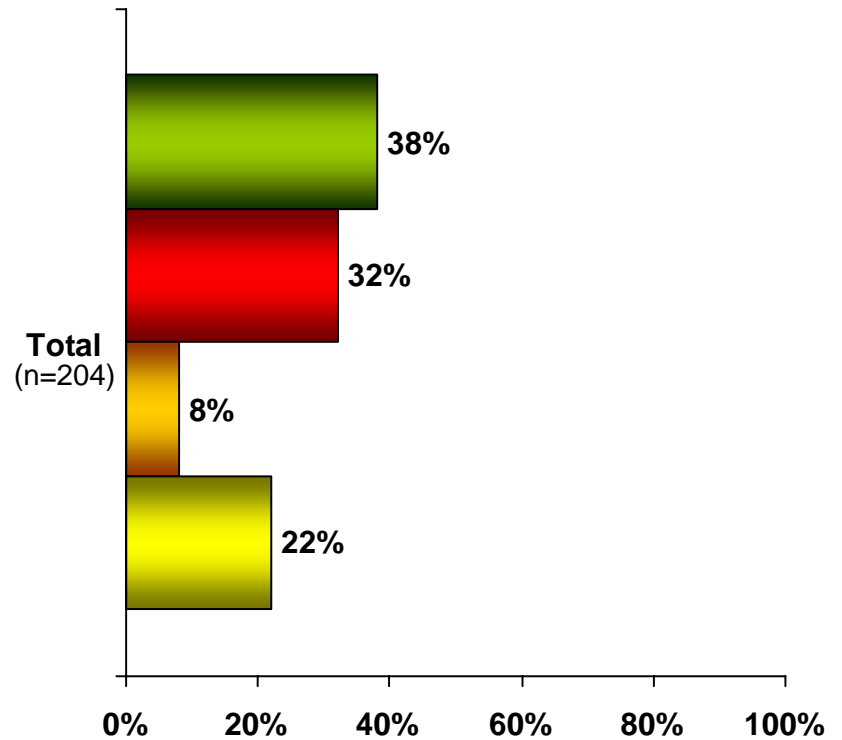
## Before Viewing Video

- Barack Obama
- John McCain
- Other Candidate
- Undecided



## After Viewing Video

- Barack Obama
- John McCain
- Other Candidate
- Undecided



Percentages may not equal 100 due to rounding

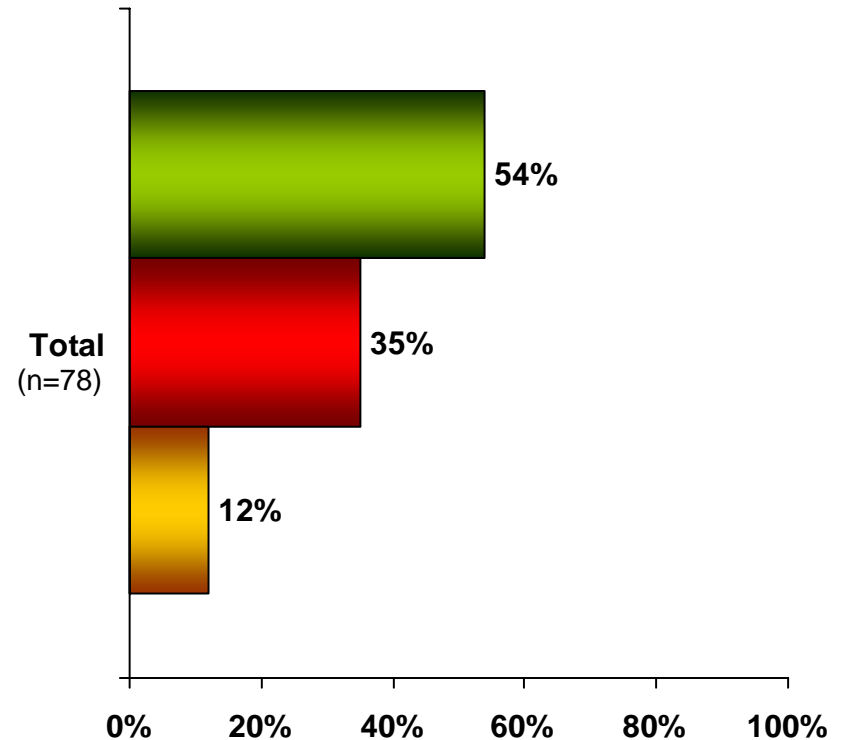
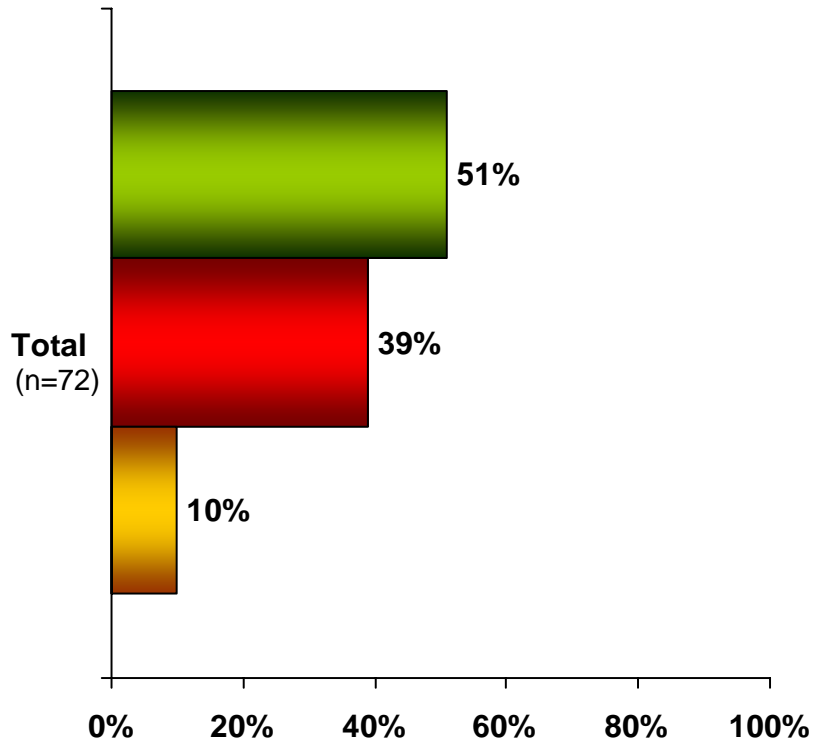
**If respondent indicated they will vote for Obama:**  
**“Which of the following best describes your likelihood to vote for Barack Obama**  
**in the 2008 Presidential Election?”**

**Before** Viewing Video

**After** Viewing Video

- Definitely Voting for Obama
- Strongly leaning toward voting for Obama
- Somewhat leaning toward voting for Obama

- Definitely Voting for Obama
- Strongly leaning toward voting for Obama
- Somewhat leaning toward voting for Obama



Percentages may not equal 100 due to rounding

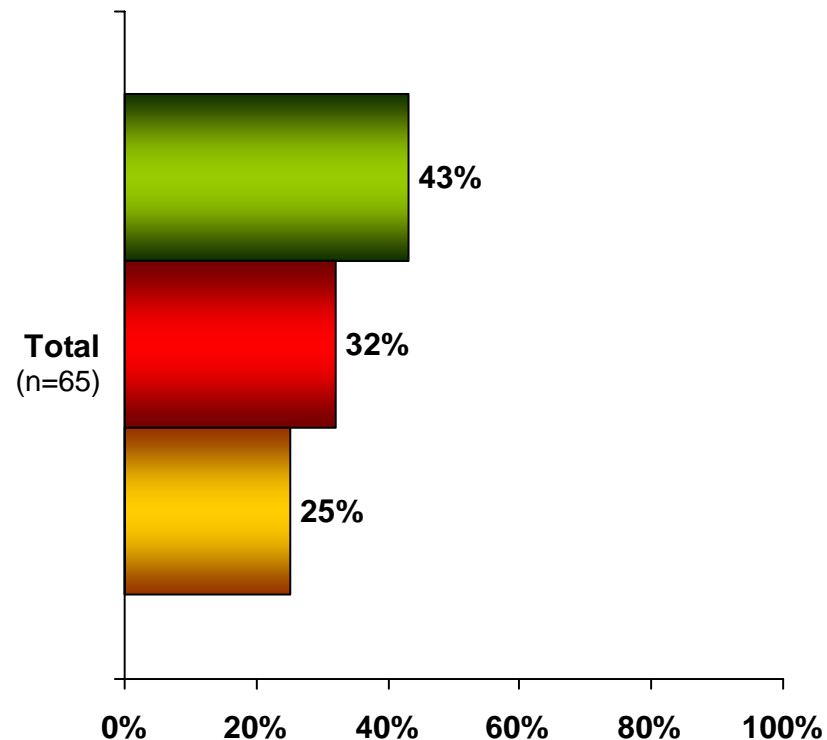
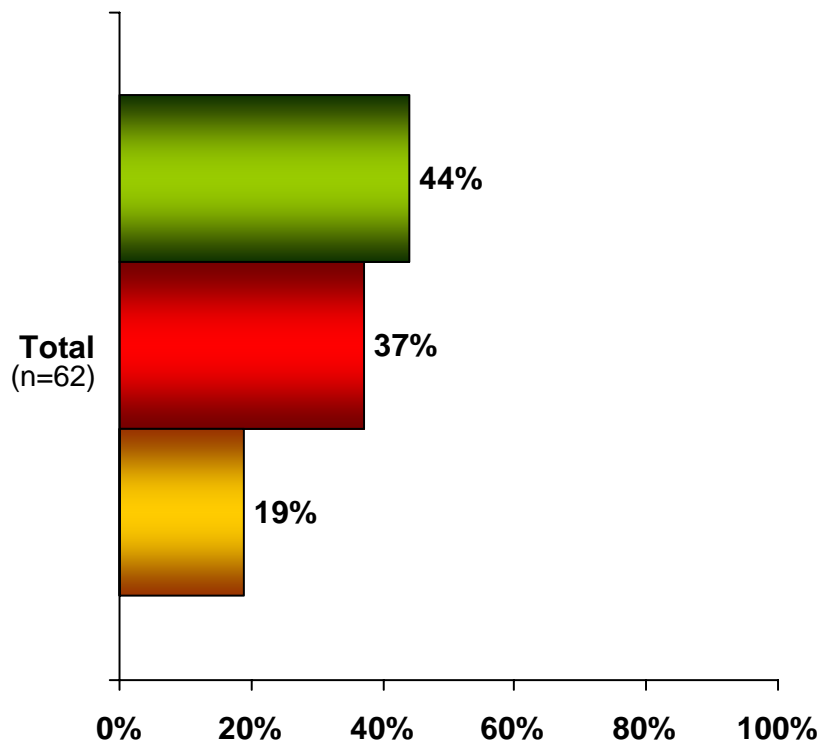
**If respondent indicated they will vote for McCain:**  
**“Which of the following best describes your likelihood to vote for John McCain**  
**in the 2008 Presidential Election?”**

**Before** Viewing Video

**After** Viewing Video

- Definitely Voting for McCain
- Strongly leaning towards voting for McCain
- Somewhat leaning towards voting for McCain

- Definitely Voting for McCain
- Strongly leaning towards voting for McCain
- Somewhat leaning towards voting for McCain



Percentages may not equal 100 due to rounding

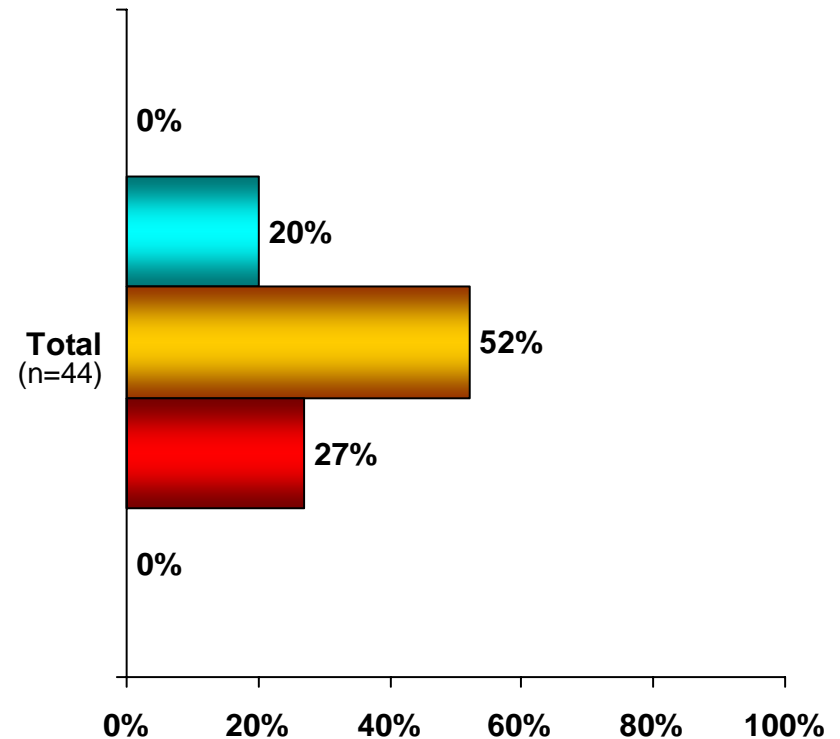
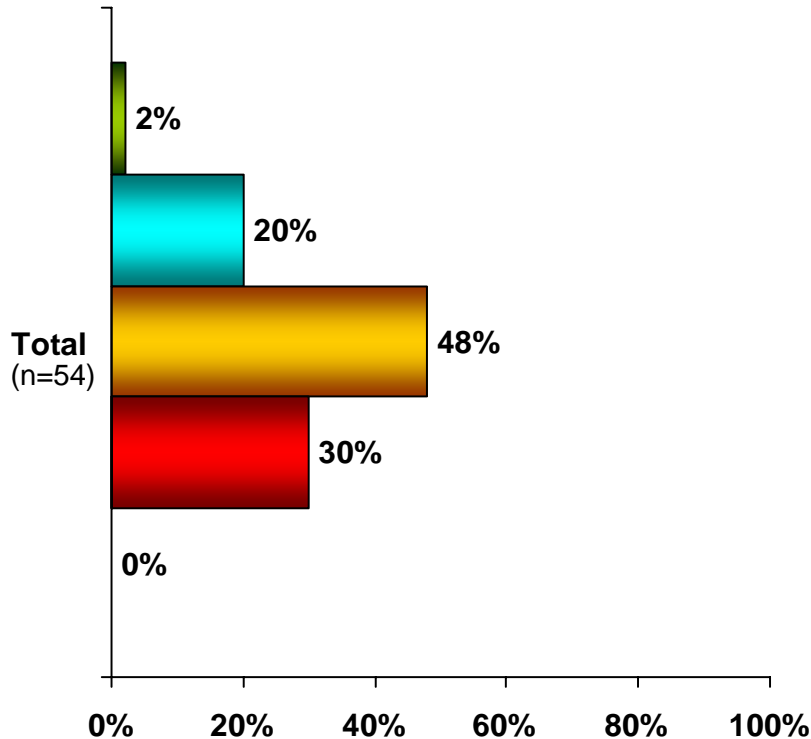
**If respondent indicated they are undecided:**  
**“We understand that you are undecided; which of the following best describes your position between voting for John McCain and Barack Obama?”**

**Before Viewing Video**

**After Viewing Video**

- Strongly leaning toward McCain
- Somewhat leaning toward McCain
- Not Sure
- Somewhat leaning toward Obama
- Strongly leaning toward Obama

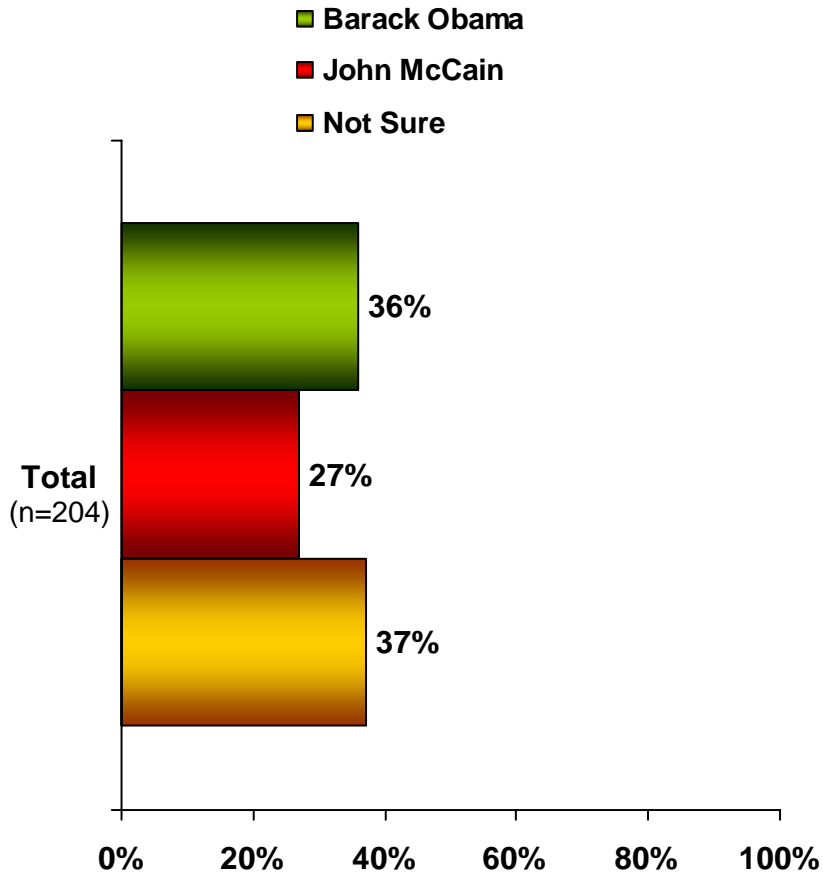
- Strongly leaning toward McCain
- Somewhat leaning toward McCain
- Not Sure
- Somewhat leaning toward Obama
- Strongly leaning toward Obama



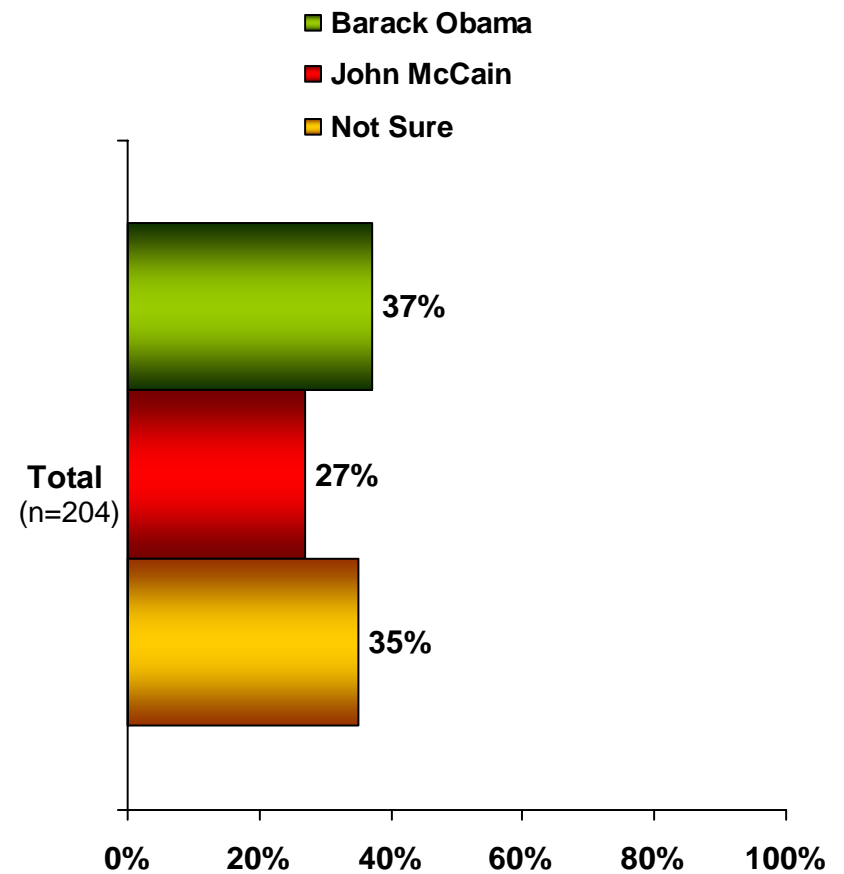
Percentages may not equal 100 due to rounding

# “Which candidate do you believe has the best plan to manage and improve the US economy?”

## Before Viewing Video



## After Viewing Video



Percentages may not equal 100 due to rounding